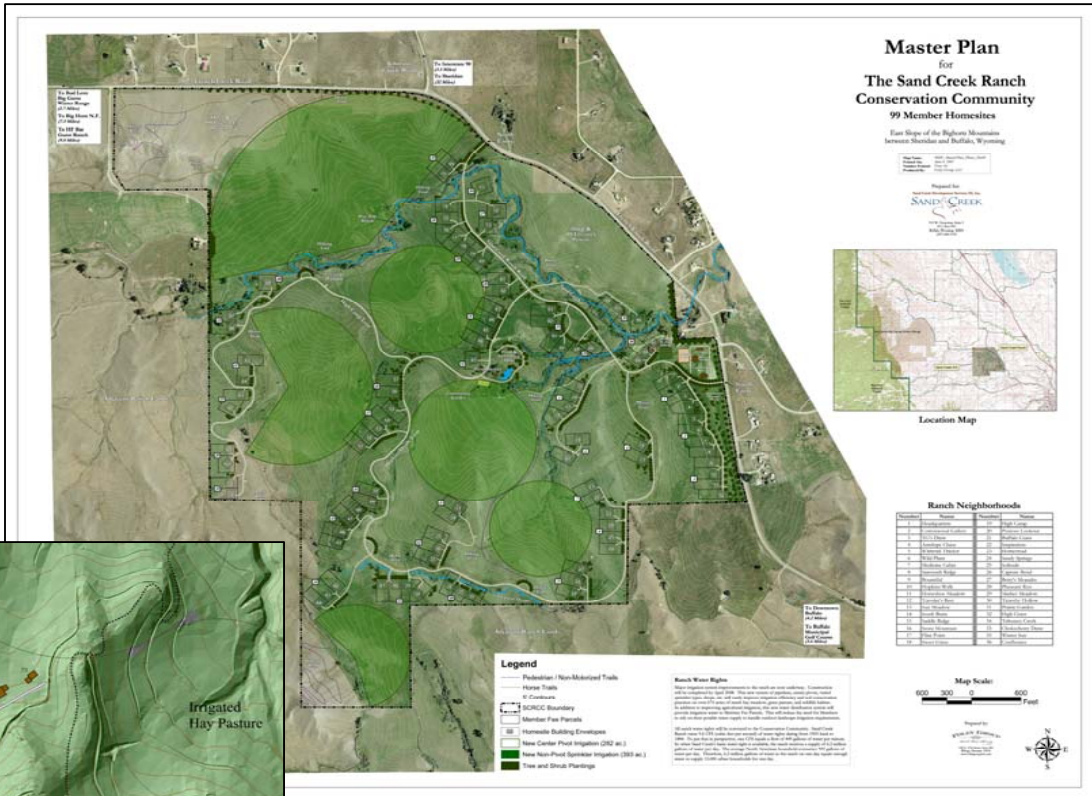


Projects

The Sand Creek Ranch
Conservation Community
Johnson County, Wyoming

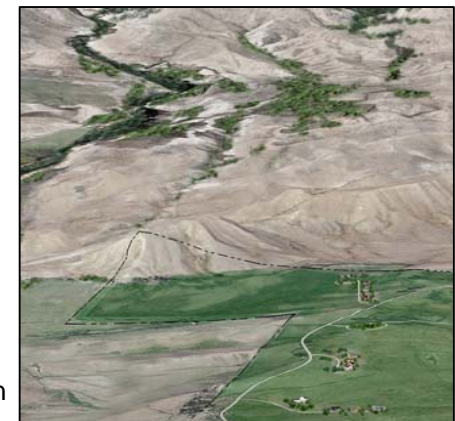
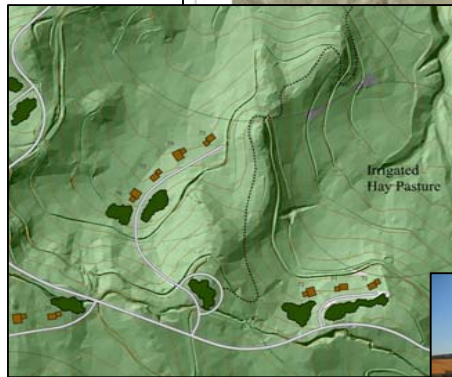


Services Provided:

- Ranch Master Planning
- Limited Development Planning

Key Service Components:

- Markets & Competition Research
- GIS Inventory & Viewshed Analysis
- Project Programming & Phasing
- Master Plan Development
- Entitlement & Regulatory Approvals



Project Overview:

Located at the foot of the Big Horn Mountains, this 835-acre hay ranch was master planned as a ranch conservation community targeting the baby-boomer early retiree market. The Foley Group has worked with the landowner in evaluating regional markets and competition, and in creating and analyzing development alternatives that provide clustered residences and recreational amenities that preserve mountain views, wildlife habitat, and maintain the ranch's hay production capacity. The final SCRCC master plan leaves over 85% of the ranch as open space. Integral to the planning process was the design and development of a comprehensive GIS land inventory database that facilitates conceptual planning, product development, land conservation analysis, and site-specific terrain modeling for ranch homestead and rural infrastructure locations.

Project

**Wagonhound Land & Livestock
Master Plan & Site Improvements**

Douglas, Wyoming